

DESK SPACE FOR RENT



This is a unique opportunity to rent premium commercial space in the Living Building Certified Bullitt Center. Join like-minded organizations in aligning your mission with your office space by working in the **greenest commercial office building in the world**.

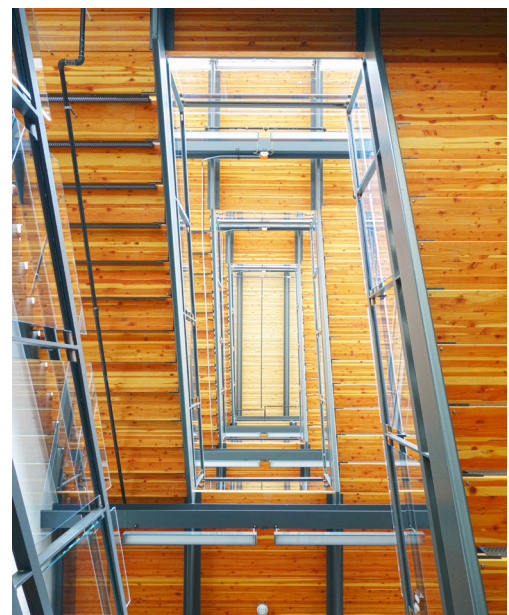
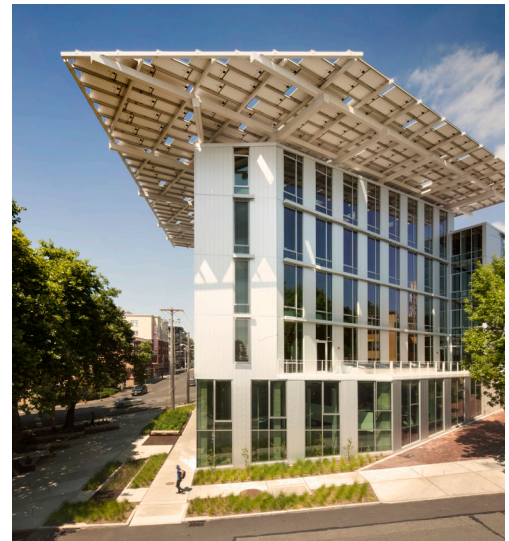
This first floor open office features soaring ceilings with large operable windows for lots of natural light and fresh air. The 3,211 square foot floor plan can be customized to your needs.

With a Walk Score of 100 and a Bike Score of 88, this location cannot be beat. This vibrant area features many restaurants and is just a short walk to the Pike/Pine corridor, Light Rail station, and Seattle Street Car.

Interested? Reach out to the International Living Future Institute by email at info@living-future.org.

AMENITIES INCLUDE:

- Internet
- Secure bike storage
- Showers
- Fully equipped shared kitchen
- Conference room access
- Plaza with ping pong tables
- Controlled entry
- Dog-friendly





RENTAL DETAILS

Dedicated Desk

\$550/month

Your own space with a locking file cabinet, 24/7 access, and the option to have your business name on the call box—as well as all standard amenities.

Leases begin on the 1st of the month and are generally six months to a year in length (lease term negotiable).

Team spaces are available!

